



# Floor Standing (with casing) FDFL

# Floor Standing (without casing) FDFU

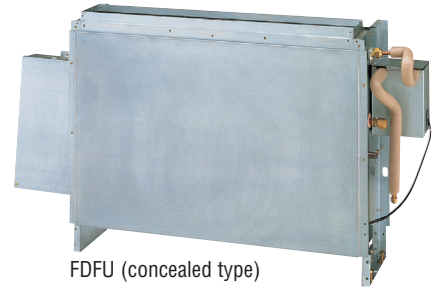
**Model No.**

FDFL28KXE6  
FDFL45KXE6  
FDFL71KXE6

FDFU28KXE6  
FDFU45KXE6  
FDFU56KXE6  
FDFU71KXE6



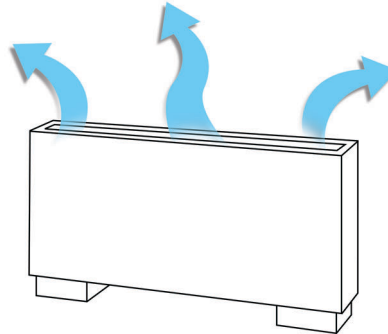
FDFL



FDFU (concealed type)



Compact design at 630mm height



Wider airflow for optimum comfort

## Specifications

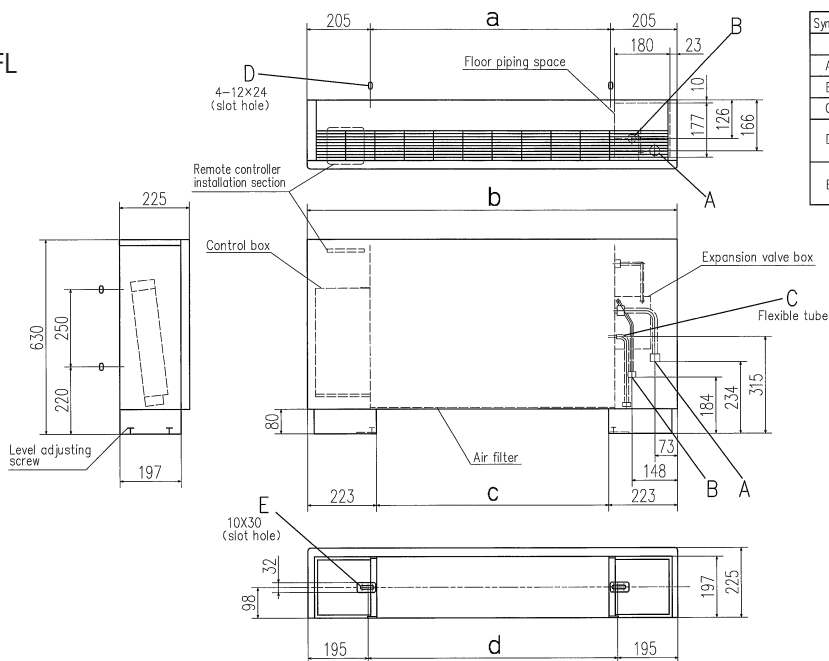
Item	Model	FDFL28KXE6	FDFL45KXE6	FDFL71KXE6	FDFU28KXE6	FDFU45KXE6	FDFU56KXE6	FDFU71KXE6
Nominal cooling capacity	kW	2.8	4.5	7.1	2.8	4.5	5.6	7.1
Nominal heating capacity	kW	3.2	5.0	8.0	3.2	5.0	6.3	8.0
Power source		1 Phase 220-240V, 50Hz						
Power consumption	Cool	0.09-0.10			0.09-0.10			
	Heat	0.09-0.10			0.09-0.10			
Sound pressure level	dB(A)	Hi:41 Me:38 Lo:36	Hi:43 Me:41 Lo:40		Hi:41 Me:38 Lo:36	Hi:43 Me:41 Lo:40		
Exterior dimensions H x W x D	mm	630x1196x225		630x1481x225	630x1077x225		630x1362x225	
Net weight	kg	32		40	25		32	
Air flow (Standard)	CMM	Hi:12 Me:11 Lo:10	Hi:14 Me:12 Lo:10	Hi:18 Me:15 Lo:12	Hi:12 Me:11 Lo:10	Hi:14 Me:12 Lo:10		Hi:18 Me:15 Lo:12
Air filter, Q'ty		Polypropylene net x1 (Washable)						
Remote control		wired:RC-E3, RCH-E3 wireless:RCN-KIT3-E						
Installation data Refrigerant piping size	mm(in)	Liquid line:ø6.35(1/4") Gas line:ø9.52(3/8")	Liquid line:ø6.35(1/4") Gas line:ø12.7(1/2")	Liquid line:ø9.52(3/8") Gas line:ø15.88(5/8")	Liquid line:ø6.35(1/4") Gas line:ø9.52(3/8")	Liquid line:ø6.35(1/4") Gas line:ø12.7(1/2")		Liquid line:ø9.52(3/8") Gas line:ø15.88(5/8")

1. The data are measured under the following conditions(ISO-T1). Cooling: Indoor temp. of 27°CDB, 19°CWB, and outdoor temp. of 35°CDB. Heating: Indoor temp. of 20°CDB, and outdoor temp. of 7°CDB, 6°CWB.  
2. Sound pressure level indicates the value in an anechoic chamber. During operation these values are somewhat higher due to ambient conditions.

# Dimensions

All measurements in mm.

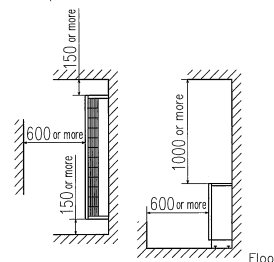
## FDFL



Symbol	Content			
	Model	FDL28KXE6	FDL45KXE6	FDL71KXE6
A	Gas piping (Accessory)	φ9.52 (3/8") (Flare)	φ12.7 (1/2") (Flare)	φ15.88 (5/8") (Flare)
B	Liquid piping	φ6.35 (1/4") (Flare)		φ9.52 (3/8") (Flare)
C	Drain piping (Accessory)	PT20A female screw, 360mm		PT20A female screw, 360mm
D	Slot hole for wall mounting	(M10)		(M10)
E	Metal plate for floor mounting (Accessory)	(M8)		(M8)

Note (1) The model name label is attached on the lid of the control box.

Space for installation and service

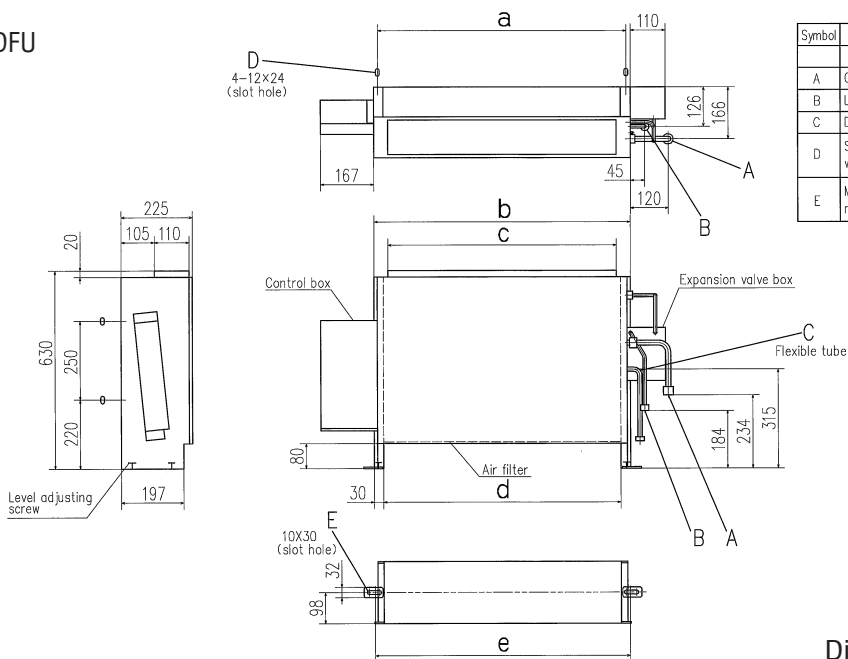


## Dimension Table

Unit:mm

model	a	b	c	d
FDL28KXE6, 45KXE6	786	1196	750	806
FDL71KXE6	1071	1481	1035	1091

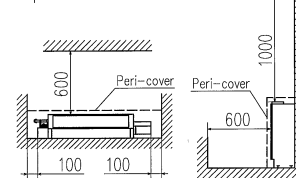
## FDFU



Symbol	Content			
	Model	FDL28KXE6	FDL45KXE6, 56KXE6	FDL71KXE6
A	Gas piping (Accessory)	φ9.52 (3/8") (Flare)	φ12.7 (1/2") (Flare)	φ15.88 (5/8") (Flare)
B	Liquid piping	φ6.35 (1/4") (Flare)		φ9.52 (3/8") (Flare)
C	Drain piping (Accessory)	PT20A female screw, 360mm		PT20A female screw, 360mm
D	Slot hole for wall mounting	(M10)		(M10)
E	Metal plate for floor mounting (Accessory)	(M8)		(M8)

Note (1) The model name label is attached on the lid of the control box.

Space for installation and service



## Dimension Table

Unit:mm

model	a	b	c	d	e
FDL28KXE6, 45KXE6, 56KXE6	786	810	722	750	806
FDL71KXE6	1071	1095	1007	1035	1091