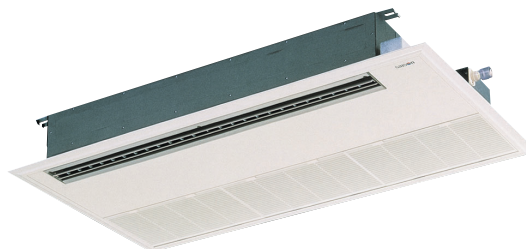


Ceiling Cassette -1way- FDTS

Model No.
FDTS45KXE6
FDTS71KXE6



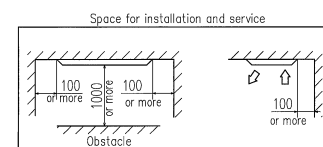
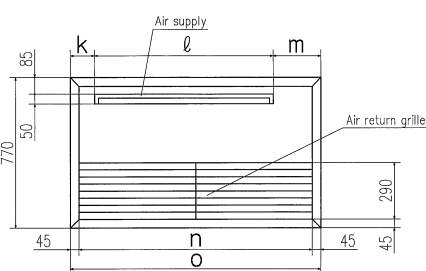
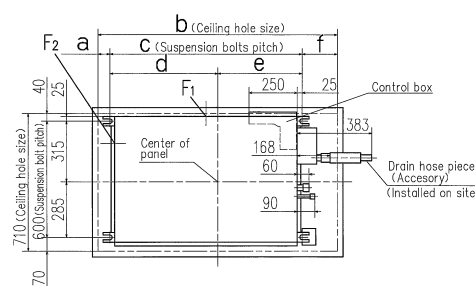
Specifications

Item	Model	FDTS45KXE6	FDTS71KXE6
Nominal cooling capacity	kW	4.5	7.1
Nominal heating capacity	kW	5.0	8.0
Power source		1 Phase 220-240V, 50Hz	
Power consumption	Cool	0.09-0.11	0.12-0.15
	Heat	0.09-0.11	0.12-0.15
Sound pressure level	dB(A)	Hi:43 Me:38 Lo:36	Hi:44 Me:38 Lo:36
Exterior dimensions H x W x D	mm	Unit:194x1040x650 Panel:10x1290x770	Unit:194x1300x650 Panel:10x1500x770
Net weight	kg	Unit:27 Panel:6	Unit:31 Panel:7
Air flow (Standard)	CMM	Hi:14 Me:12 Lo:10	Hi:18 Me:15 Lo:12
Outside air intake		Possible	
Panel		TS-PSA-29W-E	TS-PSA-39W-E
Air filter, Q'ty		Pocket plastic net x2 (Washable)	Pocket plastic net x3 (Washable)
Remote control		wired:RC-E3, RCH-E3 wireless:RCN-KIT3-E	
Installation data		Liquid line:ø6.35(1/4") Gas line:ø12.7(1/2")	Liquid line:ø9.52(3/8") Gas line:ø15.88(5/8")

1. The data are measured under the following conditions(ISO-T1). Cooling: Indoor temp. of 27°CDB, 19°CWB, and outdoor temp. of 35°CDB. Heating: Indoor temp. of 20°CDB, and outdoor temp. of 7°CDB, 6°CWB.
2. Sound pressure level indicates the value in an anechoic chamber. During operation these values are somewhat higher due to ambient conditions.

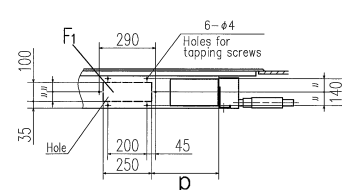
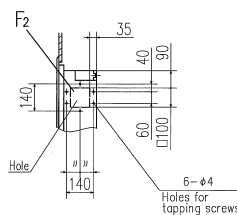
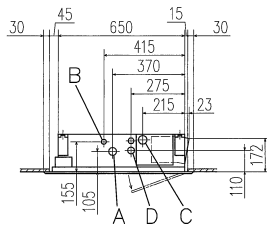
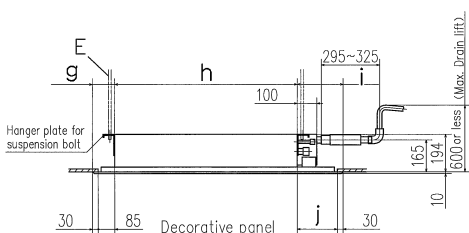
Dimensions

All measurements in mm.



Make a space of 4000 or more between the units when installing more than one.

- Notes (1) The model name label is attached on the fan case inside the air return grille.
(2) Prepare the connecting socket (VP20) on site.



Symbol	Model	Content	
		FDTS45KXE6	FDTS71KXE6
A	Gas piping	ø12.7 (1/2") (Flare)	ø15.88 (5/8") (Flare)
B	Liquid piping	ø6.35 (1/4") (Flare)	ø9.52 (3/8") (Flare)
C	Drain piping	VP20(Ø20, ØD.26) Note (2)	VP20(Ø20, ØD.26) Note (2)
D	Hole for wiring	ø35	ø35
E	Suspension bolts	(M10)	(M10)
F1,2	Outside air opening for ducting	(Knock out)	(Knock out)

Dimension Table

model	a	b	c	d	e	f	g	h	i	j	k	ℓ	m	n	o	p
FDTS45KXE6	60	1230	990	555	435	180	115	940	235	205	125	920	245	1290	1290	345
FDTS71KXE6	45	1440	1250	675	575	145	100	1200	200	70	110	1180	210	1410	1500	475



Ceiling Cassette -1way Compact-FDTQ

Model No.

- FDTQ22KXE6
- FDTQ28KXE6
- FDTQ36KXE6

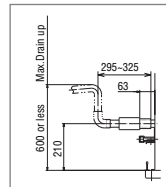


Fits into standard
600 x 600 ceiling

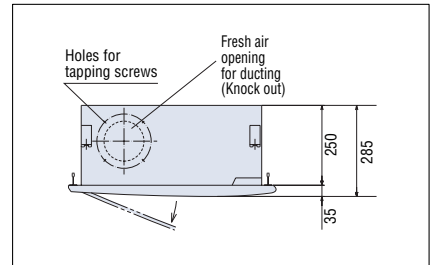
- Comfortable effective cooling for small rooms, with low fan speed air flow at just 5.4m³/min.



Optional wide panel shown for solid ceiling



Condensate drain pump included as standard



Ultra slim design at just 250mm above the ceiling

Specifications

Item	Model	FDTQ22KXE6				FDTQ28KXE6				FDTQ36KXE6			
Panel Name		Direct blow panel		Duct panel		Direct blow panel		Duct panel		Direct blow panel		Duct panel	
Panel mode (Option)		TQ-PSA-15W-E	TQ-PSB-15W-E	QR-PNA-14W-ER	QR-PNB-14W-ER	TQ-PSA-15W-E	TQ-PSB-15W-E	QR-PNA-14W-ER	QR-PNB-14W-ER	TQ-PSA-15W-E	TQ-PSB-15W-E	QR-PNA-14W-ER	QR-PNB-14W-ER
Nominal cooling capacity	kW	2.2				2.8				3.6			
Nominal heating capacity	kW	2.5				3.2				4.0			
Power source		1 Phase 220-240V, 50Hz											
Power consumption	Cool	0.04-0.05				0.04-0.05				0.04-0.05			
	Heat	0.04-0.05				0.04-0.05				0.04-0.05			
Sound pressure level	dB(A)	Hi:38 Lo:33		Hi:42 Lo:39		Hi:38 Lo:33		Hi:42 Lo:39		Hi:38 Lo:33		Hi:42 Lo:39	
Exterior dimensions H x W x D	Unit	250x570x570											
	Panel	mm	35x625x650	35x780x650	35x625x650	35x780x650	35x625x650	35x780x650	35x625x650	35x780x650	35x625x650	35x780x650	35x625x650
Net weight	kg	Unit:19 Panel:2.5	Unit:19 Panel:3	Unit:19 Panel:2.5	Unit:19 Panel:3	Unit:19 Panel:2.5	Unit:19 Panel:3	Unit:19 Panel:2.5	Unit:19 Panel:3	Unit:19 Panel:2.5	Unit:19 Panel:3	Unit:19 Panel:2.5	Unit:19 Panel:3
Air flow (Standard)	CMM	Hi:7 Lo:5.4		Hi:7 Lo:6.5		Hi:7 Lo:5.4		Hi:7 Lo:6.5		Hi:7 Lo:5.4		Hi:7 Lo:6.5	
Outside air intake		Possible											
Air filter, Q'ty		Pocket Plastic net x1 (Washable)											
Remote control		wired:RC-E3, RCH-E3 wireless:RCN-KIT3-E											
Installation data Refrigerant piping size	mm(in)	Liquid line:ø6.35(1/4")						Liquid line:ø6.35(1/4")					
		Gas line:ø9.52(3/8")						Gas line:ø12.7(1/2")					

1. The data are measured under the following conditions(ISO-T1). Cooling: Indoor temp. of 27°CDB, 19°CWB, and outdoor temp. of 35°CDB. Heating: Indoor temp. of 20°CDB, and outdoor temp. of 7°CDB, 6°CWB.
2. Sound pressure level indicates the value in an anechoic chamber. During operation these values are somewhat higher due to ambient conditions.