



# Indoor units

## Ceiling Cassette -4way- FDT

**Model No.**

- |            |             |
|------------|-------------|
| FDT28KXE6A | FDT90KXE6A  |
| FDT36KXE6A | FDT112KXE6A |
| FDT45KXE6A | FDT140KXE6A |
| FDT56KXE6A | FDT160KXE6A |
| FDT71KXE6A |             |



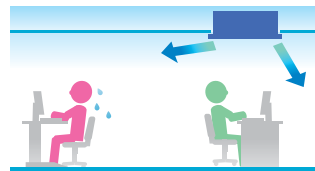
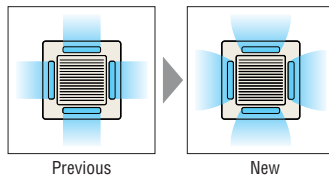
Wireless remote control  
**RCN-T-36W-E (option)**

**Individual flap control system**

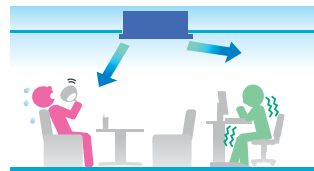
According to room temperature conditions, four directions of air flow can be controlled by individual flap as preferred. As individual flap control is available even after installation, installation area became wider than before.



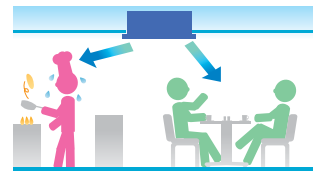
Due to optimization of outlet design of air flow with our new advanced technology, sufficient air flow is secured and long reach of air flow is realized.



for person who is far from the indoor unit



for both persons who are feeling hot or cold

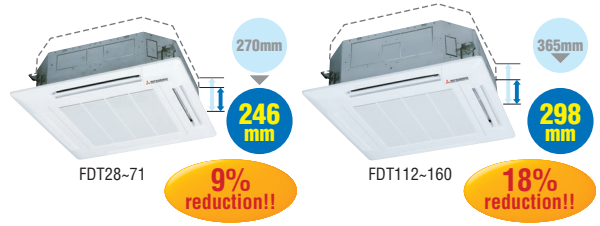
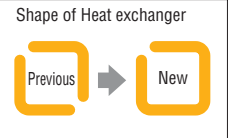


can cool both the kitchen and the guests

**The thinnest design**

Thanks to new design of heat exchanger changed from 2 parts to 1 part, the height of indoor unit is reduced drastically.

Furthermore applying DC fan motors to FDT models, the highest energy efficiency level, reduction of weight and significant compact design are realized.



## Specifications

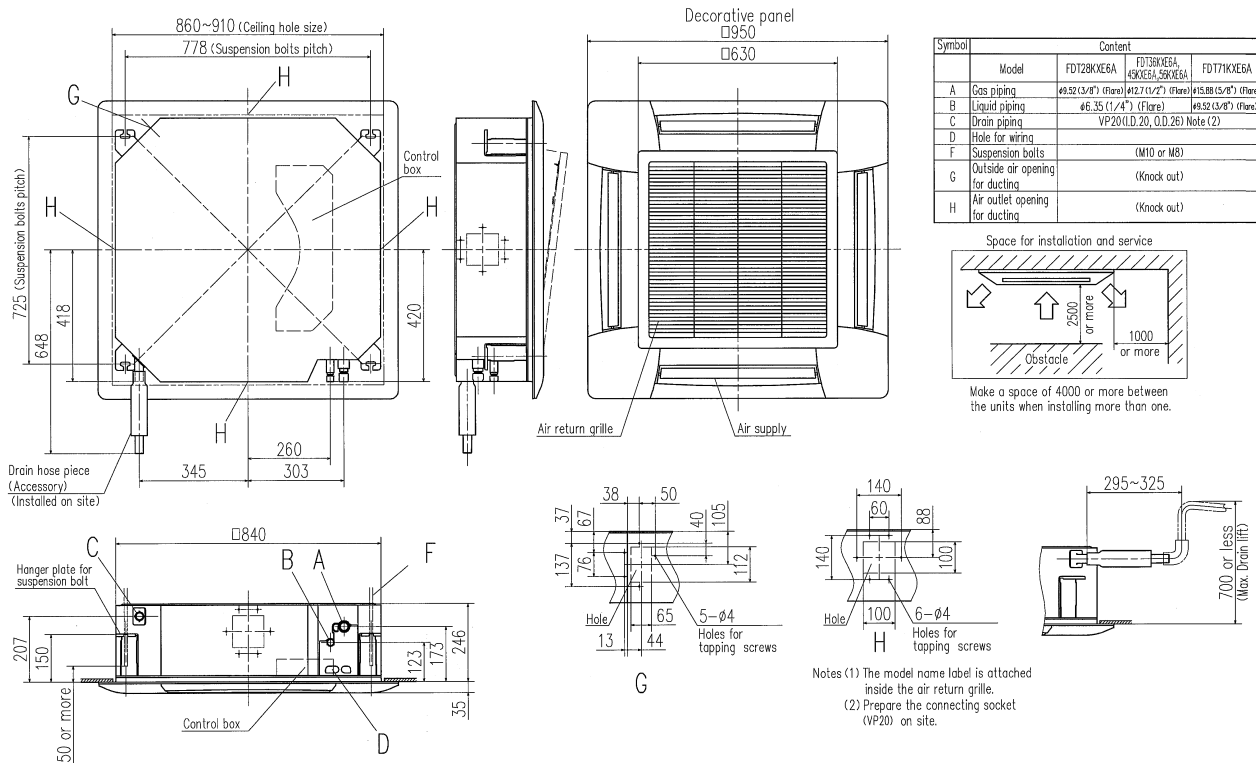
Item	Model	FDT28KXE6A	FDT36KXE6A	FDT45KXE6A	FDT56KXE6A	FDT71KXE6A	FDT90KXE6A	FDT112KXE6A	FDT140KXE6A	FDT160KXE6A	
Nominal cooling capacity	kW	2.8	3.6	4.5	5.6	7.1	9.0	11.2	14.0	16.0	
Nominal heating capacity	kW	3.2	4.0	5.0	6.3	8.0	10.0	12.5	16.0	18.0	
Power source		1 Phase 220-240V, 50Hz									
Power consumption	Cool	0.03-0.03			0.04-0.04	0.10-0.10	0.14-0.14				
	Heat	0.03-0.03			0.04-0.04	0.10-0.10	0.14-0.14				
Sound pressure level	dB(A)	Hi:33 Me:31 Lo:30					Hi:40 Me:37 Lo:35		Hi:42 Me:40 Lo:37		Hi:43 Me:41 Lo:38
Exterior dimensions H x W x D	mm	Unit:246x840x840 Panel:35x950x950					Unit:298x840x840 Panel:35x950x950				
Net weight	kg	Unit:22 Panel:5.5			Unit:24 Panel:5.5		Unit:27 Panel:5.5				
Air flow (Standard)	CMM	Hi:18 Me:16 Lo:14					Hi:27 Me:24 Lo:20		Hi:30 Me:27 Lo:23		
Outside air intake		Possible									
Panel		T-PSA-36W-E									
Air filter, Q'ty		Pocket Plastic net x1 (Washable)									
Remote control		wired:RC-E3, RCH-E3 wireless:RCN-T-36W-E									
Installation data		Liquid line:ø6.35(1/4")		Liquid line:ø6.35(1/4")			Liquid line:ø9.52(3/8")				
Refrigerant piping size	mm(in)	Gas line:ø9.52(3/8")		Gas line:ø12.7(1/2")			Gas line:ø15.88(5/8")				
Accessories		Mounting kit, Drain hose									

1. The data are measured under the following conditions(ISO-T1). Cooling: Indoor temp. of 27°CDB, 19°CWB, and outdoor temp. of 35°CDB. Heating: Indoor temp. of 20°CDB, and outdoor temp. of 7°CDB, 6°CWB.  
2. Sound pressure level indicates the value in an anechoic chamber. During operation these values are somewhat higher due to ambient conditions.

# Dimensions

All measurements in mm.

FDT28KXE6A, 36KXE6A, 45KXE6A, 56KXE6A, 71KXE6A



FDT90KXE6A, 112KXE6A, 140KXE6A, 160KXE6A

