

# INDOOR UNIT

## CEILING SUSPENDED

# FDEN



FDEN 40/50/60/71/100/125/140V

### Wireless remote control



RCN-E1R  
(Option)

### Wired remote control

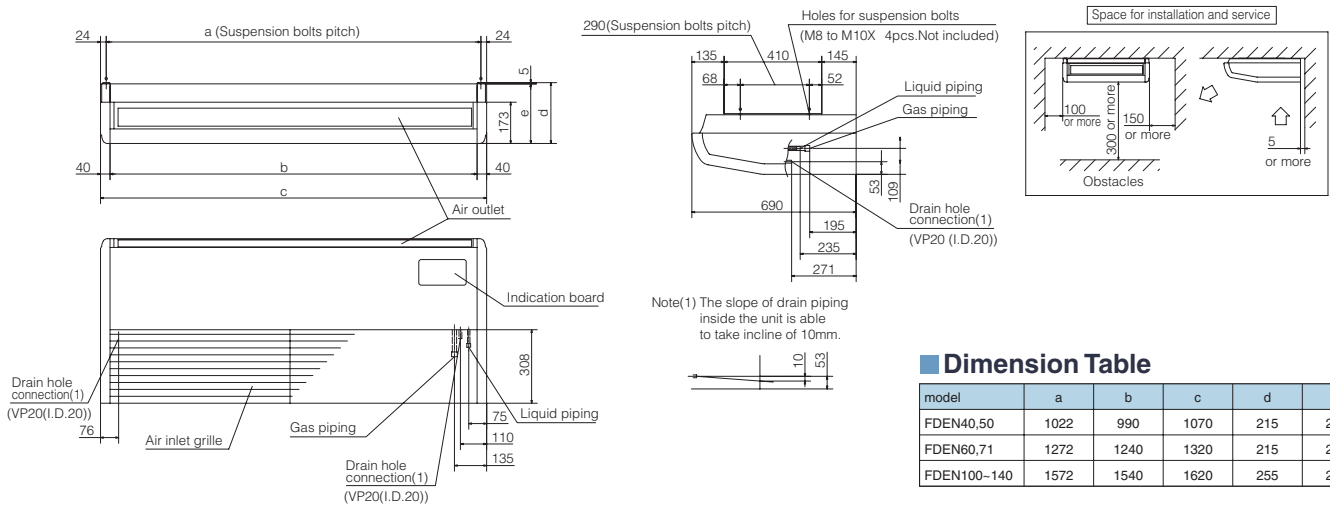


RC-E3  
(Option)



RCH-E3  
(Option)

## Outline drawing (Unit:mm)



Point 1

## Improved installation workability

### Increased freedom of a piping layout



The refrigerant pipe from the unit can be arranged in three directions, rear, right and up. The drain pipe can be arranged in two directions, left and right. This will allow a free layout of piping for various installation conditions. The unit can only be serviced from the bottom.

Point 2

## Compact and modern design

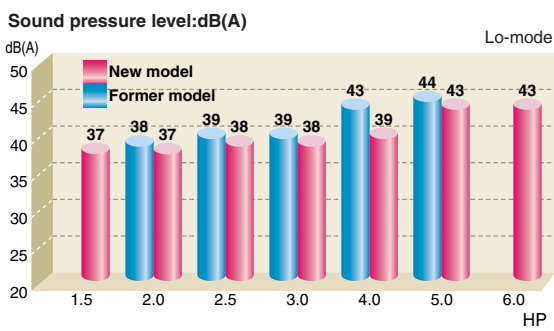


All models fit compactly on ceiling. (Height-210mm or 250mm). Plain, modern design featuring rounded edges gives room a comfortable atmosphere. FDEN40V, 50V weights 30kg the lightest level in the industry. Convenient and quick installation.

**Point 3** **New design --- Drastic-reduction of noise level**



Reviewing sirocco fan (diameter and wide) enables drastic reduction of noise level.



**SPECIFICATIONS** The values are for simultaneous Multi operation.

Set model name		F DEN40ZIXV	F DEN50ZIXV	F DEN60ZIXV
Indoor name		F DEN40V	F DEN50V	F DEN60V
Outdoor name		S RC40ZIX-S	S RC50ZIX-S	S RC60ZIX-S
Power source		1Phase 220-240V 50HZ, 1Phase 220V 60Hz		
Type		Inverter		
Nominal cooling capacity (Min~Max)	ISO-T1(JIS) kW	4.0 (1.8~4.7)	5.0 (2.2~5.6)	5.6 (2.8~6.3)
Nominal heating capacity (Min~Max)	ISO-T1(JIS) kW	4.5 (2.0~5.4)	5.4 (2.5~6.3)	6.7 (3.1~7.1)
Input	Cooling/Heating kW	1.04/1.13	1.59/1.58	1.95/2.12
COP	Cooling/Heating	3.85/3.98	3.14/3.42	2.87/3.16
Energy label	Cooling/Heating	A/A	B/B	C/D
Inrush current (Max. running current)	A	5(12)		5(14)
Sound level *1	Indoor	Hi:39 Me:38 Lo:37		Hi:41 Me:39 Lo:38
	Outdoor	47		48
Air flow	Indoor	Hi:11 Me:9 Lo:7		Hi:18 Me:14 Lo:12
	Outdoor	40		
Indoor unit	Exterior dimensions	Height x Width x Depth	mm	210x1,070x690
	Net weight		kg	30
Remote control		Wired:RC-E3, RCH-E3 Wireless:RCN-E1R		
Outdoor unit	Exterior dimensions	Height x Width x Depth	mm	640x800(+71)x290
	Net weight		kg	43
Type of compressor		Scroll		
Ref.control		EEV		
Ref.amount precharged			kg(m)	1.4(15)
Ref.piping size		Liquid/Gas	ø	6.35/12.7
Range of usage	Ref.piping length		m	30
	Vertical height difference	between O/U and I/U	<O/U	20
			>O/U	20
Limitations	Air temp.	Cooling	I/U	18~30
			O/U	-15~43
		Heating	I/U	18~30
			O/U	-15~24

**SPECIFICATIONS** The values are for simultaneous Multi operation.

Set model name		F DEN71VNV	F DEN100VNV	F DEN125VNV	F DEN140VNV	F DEN100VSV	F DEN125VSV	F DEN140VSV
Indoor name		F DEN71V	F DEN100V	F DEN125V	F DEN140V	F DEN100V	F DEN125V	F DEN140V
Outdoor name		F DC71VN	F DC100VN	F DC125VN	F DC140VN	F DC100VS	F DC125VS	F DC140VS
Power source		1Phase 220-240V 50HZ, 1Phase 220V 60Hz				3Phase 380-415V 50Hz, 3Phase 380V 60Hz		
Type		Inverter						
Nominal cooling capacity (Min~Max)	ISO-T1(JIS) kW	7.1 (3.2~8.0)	10.0 (4.0~11.2)	12.5 (5.0~14.0)	14.0 (5.0~14.5)	10.0 (4.0~11.2)	12.5 (5.0~14.0)	14.0 (5.0~14.5)
Nominal heating capacity (Min~Max)	ISO-T1(JIS) kW	8.0 (3.6~9.0)	11.2 (4.0~12.5)	14.0 (4.0~16.0)	16.0 (4.0~16.5)	11.2 (4.0~12.5)	14.0 (4.0~16.0)	16.0 (4.0~16.5)
Input	Cooling/Heating kW	2.01/2.21	2.85/2.97	4.10/3.65	4.98/4.69	2.85/2.97	4.10/3.65	4.98/4.69
COP	Cooling/Heating	3.53/3.62	3.51/3.77	3.05/3.84	2.81/3.41	3.51/3.77	3.05/3.84	2.81/3.41
Energy label	Cooling/Heating	A/A	A/A	B/A	C/B	A/A	B/A	C/B
Inrush current (Max. running current)	A	5(17)		5(24)		5(15)		
Sound level *1	Indoor	Hi:41 Me:39 Lo:38	Hi:44 Me:41 Lo:39	Hi:46 Me:44 Lo:43		Hi:44 Me:41 Lo:39	Hi:46 Me:44 Lo:43	
	Outdoor	48	49	Cooling:50 Heating:51	51	49	Cooling:50 Heating:51	51
Air flow	Indoor	Hi:18 Me:14 Lo:12	Hi:26 Me:23 Lo:21	Hi:29 Me:26 Lo:23		Hi:26 Me:23 Lo:21	Hi:29 Me:26 Lo:23	
	Outdoor	Cooling:60 Heating:50	Cooling:76 Heating:74	Cooling:75	Heating:73	Cooling:76 Heating:74	Cooling:75	Heating:73
Indoor unit	Exterior dimensions	Height x Width x Depth	mm	210x1,320x690				
	Net weight		kg	36				
Remote control		Wired:RC-E3, RCH-E3 Wireless:RCN-E1R						
Outdoor unit	Exterior dimensions	Height x Width x Depth	mm	750x880(+88)x340				
	Net weight		kg	60				
Type of compressor		Rotary						
Ref.control		EEV						
Ref.amount precharged			kg(m)	2.95(30)		3.8(30)		
Ref.piping size		Liquid/Gas	ø	9.52/15.88				
Range of usage	Ref.piping length		m	50				
	Vertical height difference	between O/U and I/U	<O/U	30				
			>O/U	15				
Limitations	Air temp.	Cooling	I/U	18~30				
			O/U	-15~43*2				
		Heating	I/U	18~30				
			O/U	-10~24				

The data are measured under the following conditions(ISO-T1).  
 Cooling:Indoor temp. of 27°CDB, 19°CWB, and outdoor temp. of 35°CDB.  
 Heating:Indoor temp. of 20°CDB, and outdoor temp. of 7°CDB, 6°CWB.

\*1 : Indicates the value in an anechoic chamber. During operation these values are somewhat higher due to ambient conditions.  
 \*2 : If a cooling operation is conducted when the outdoor air temperature is -5°C or lower, the outdoor unit should be installed at a place where it is not influenced by natural wind. If wind blows, the low pressure will drop and compressor frequency will increase, this will cause the capacity to drop and may cause the unit to break down.