

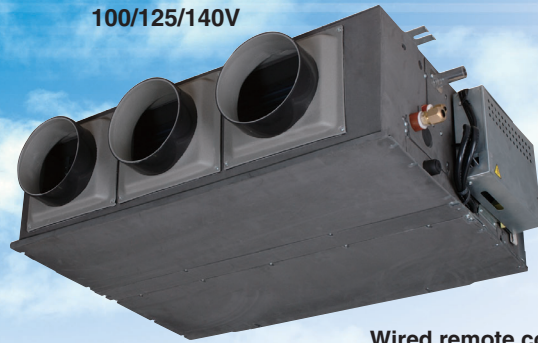
INDOOR UNIT

DUCT CONNECTED - Middle Static pressure-

FDUM



FDUM 50/60/71/
100/125/140V



Wired remote control



RC-E3
(Option)



RCH-E3
(Option)

Filter kit
UM-FL1E : for 50
UM-FL2E : for 60, 71
UM-FL3E : for 100, 125, 140
(option)



Point 1 Various Adaptability

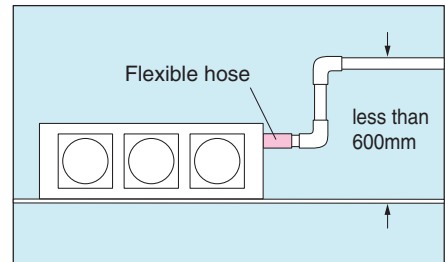
Selectable static pressure and Flexible duct design with selectable air suction (direct suction /duct suction) can meet wide pattern of installation.

Static pressure Pa

model	Standard	Max
50/60/71V	50	85
100V	60	90
125/140V	60	85

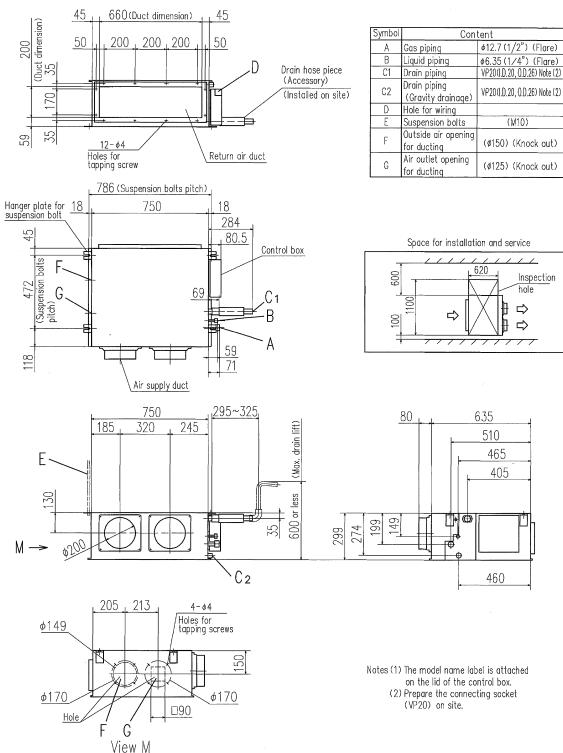
Point 2 600mm Drain Pump

Drain can be discharged upwards by 600mm from the ceiling surface. It allows a piping layout with a high degree of freedom Depending on the installation location.

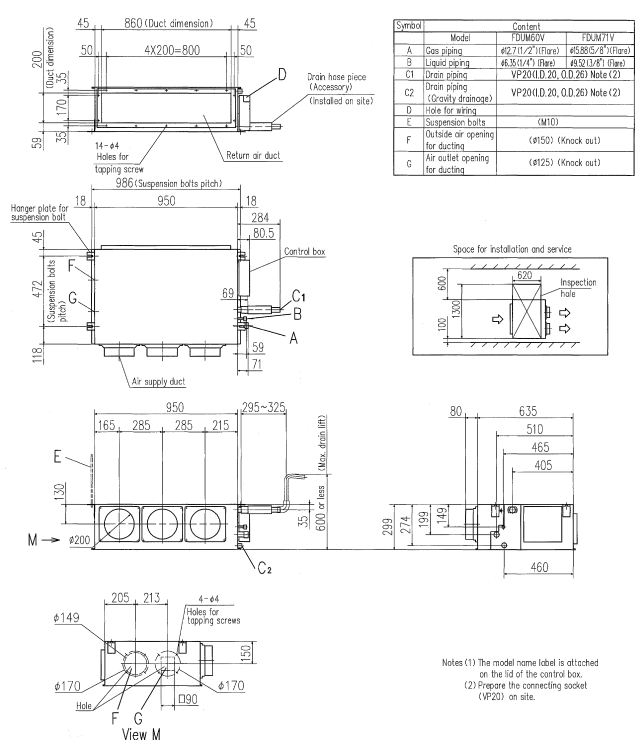


Outline drawing (Unit:mm)

Model FDUM50V

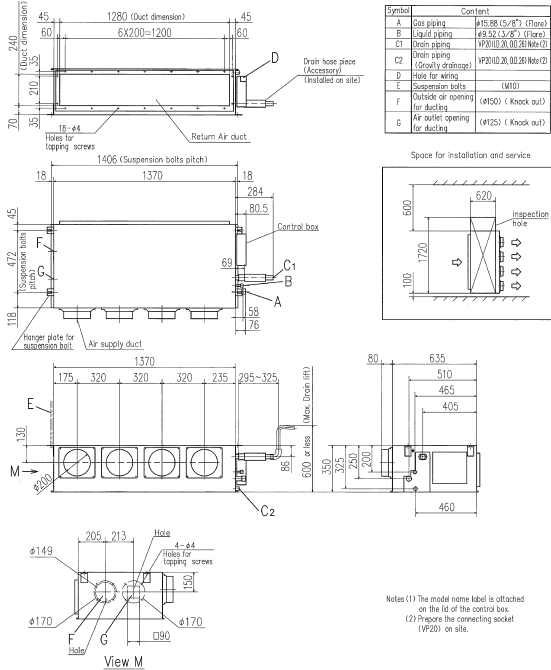


Models FDUM60V,71V



Outline drawing(Unit:mm)

Models FDUM100V,125V,140V



SPECIFICATIONS

The values are for simultaneous Multi operation.

Set model name			FDUM50ZIXV	FDUM60ZIXV	FDUM71VNV
Indoor name			FDUM50V	FDUM60V	FDUM71V
Outdoor name			SRC50ZIX-S	SRC60ZIX-S	FDC71VN
Power source			1Phase 220-240V 50Hz, 1Phase 220V 60Hz		
Type			Inverter		
Nominal cooling capacity (Min~Max)	ISO-T1(JIS)	kW	5.0 (2.2~5.6)	5.6 (2.8~6.3)	7.1 (3.2~8.0)
Nominal heating capacity (Min~Max)	ISO-T1(JIS)	kW	5.4 (2.5~6.3)	6.7 (3.1~7.1)	8.0 (3.6~9.0)
Input	Cooling/Heating	kW	1.52/1.41	1.86/1.96	2.08/2.21
COP	Cooling/Heating		3.29/3.83	3.01/3.42	3.41/3.62
Energy label	Cooling/Heating		A/A	B/B	A/A
Inrush current (Max. running current)	A		5(14)		5(17)
Sound level *1	Indoor	dB(A)	Hi:34 Me:31 Lo:28		Hi:35 Me:32 Lo:29
	Outdoor		47		48
Air flow	Indoor	CMM	Hi:14 Me:12 Lo:11	Hi:18 Me:16 Lo:14	Hi:20 Me:18 Lo:15
	Outdoor		40		Cooling:60 Heating:50
Static pressure	Pa	standard:50, Max:85			
Exterior dimensions	Height x Width x Depth	mm	299x750x635		299x950x635
Net weight	kg		34		40
Remote control	Wired:RC-E3, RCH-E3 Wireless:RCN-KIT3-E				
Exterior dimensions	Height x Width x Depth	mm	640x800(+71)x290		750x880(+88)x340
Net weight	kg		45		60
Type of compressor	Scroll				
Ref.control	EEV				
Ref.amount precharged	kg(m)		1.4(15)		2.95(30)
Ref.piping size	Liquid/Gas	ø	6.35/12.7		9.52/15.88
Ref.piping length	m		30		50
Vertical height difference	between O/U and I/U	<O/U	20		30
		>O/U	20		15
Air temp.	Cooling	I/U	18~30		
		O/U	-15~43*2		
	Heating	I/U	18~30		
		O/U	-15~24		-10~24

SPECIFICATIONS

The values are for simultaneous Multi operation.

Set model name			FDUM100VNV	FDUM125VNV	FDUM140VNV	FDUM100VSV	FDUM125VSV	FDUM140VSV	
Indoor name			FDUM100V	FDUM125V	FDUM140V	FDUM100V	FDUM125V	FDUM140V	
Outdoor name			FDC100VN	FDC125VN	FDC140VN	FDC100VS	FDC125VS	FDC140VS	
Power source			1Phase 220-240V 50Hz, 1Phase 220V 60Hz			3Phase 380-415V 50Hz, 3Phase 380V 60Hz			
Type			Inverter						
Nominal cooling capacity (Min~Max)	ISO-T1(JIS)	kW	10.0 (4.0~11.2)	12.5 (5.0~14.0)	14.0 (5.0~14.5)	10.0 (4.0~11.2)	12.5 (5.0~14.0)	14.0 (5.0~14.5)	
Nominal heating capacity (Min~Max)	ISO-T1(JIS)	kW	11.2 (4.0~12.5)	14.0 (4.0~16.0)	16.0 (4.0~16.5)	11.2 (4.0~12.5)	14.0 (4.0~16.0)	16.0 (4.0~16.5)	
Input	Cooling/Heating	kW	50Hz:2.80/2.77 60Hz:2.80/2.80	50Hz:4.03/3.80 60Hz:4.03/3.85	50Hz:4.95/4.89 60Hz:4.95/4.91	50Hz:2.80/2.77 60Hz:2.80/2.80	50Hz:4.03/3.80 60Hz:4.03/3.85	50Hz:4.95/4.89 60Hz:4.95/4.91	
COP	Cooling/Heating		50Hz:3.57/4.04 60Hz:3.57/4.00	50Hz:3.10/3.68 60Hz:3.10/3.64	50Hz:2.83/3.27 60Hz:2.83/3.26	50Hz:3.57/4.04 60Hz:3.57/4.00	50Hz:3.10/3.68 60Hz:3.10/3.64	50Hz:2.83/3.27 60Hz:2.83/3.26	
Energy label	Cooling/Heating		A/A	B/A	C/C	A/A	B/A	C/C	
Inrush current (Max. running current)	A		5(24)			5(15)			
Sound level *1	Indoor	dB(A)	Hi:37 Me:35 Lo:32	Hi:38 Me:36 Lo:33		Hi:37 Me:35 Lo:32	Hi:38 Me:36 Lo:33		
	Outdoor		49	Cooling:50	Heating:51	51	49	Cooling:50	Heating:51
Air flow	Indoor	CMM	Hi:28 Me:25 Lo:22	Hi:34 Me:31 Lo:27		Hi:28 Me:25 Lo:22	Hi:34 Me:31 Lo:27		
	Outdoor		Cooling:76	Heating:74	Cooling:75	Heating:73	Cooling:76	Heating:74	Cooling:75
Static pressure	Pa	standard:60, Max:90		standard:60, Max:85		standard:60, Max:90		standard:60, Max:85	
Exterior dimensions	Height x Width x Depth	mm	350x1,370x635						
Net weight	kg		59						
Remote control	Wired:RC-E3, RCH-E3 Wireless:RCN-KIT3-E								
Exterior dimensions	Height x Width x Depth	mm	845x970x370						
Net weight	kg		74						
Type of compressor	Rotary								
Ref.control	EEV								
Ref.amount precharged	kg(m)		3.8(30)						
Ref.piping size	Liquid/Gas	ø	9.52/15.88						
Ref.piping length	m		50						
Vertical height difference	between O/U and I/U	<O/U	30						
		>O/U	15						
Air temp.	Cooling	I/U	18~30						
		O/U	-15~43*2						
	Heating	I/U	18~30						
		O/U	-15~24						

The data are measured under the following conditions(ISO-T1).

Cooling:Indoor temp. of 27°CDB, 19°CWB, and outdoor temp. of 35°CDB. Heating:Indoor temp. of 20°CDB, and outdoor temp. of 7°CDB, 6°CWB.

*1 : Indicates the value in an anechoic chamber. During operation these values are somewhat higher due to ambient conditions.

*2 : If a cooling operation is conducted when the outdoor air temperature is -5°C or lower, the outdoor unit should be installed at a place where it is not influenced by natural wind. If wind blows, the low pressure will drop and compressor frequency will increase, this will cause the capacity to drop and may cause the unit to break down.