

INDOOR UNIT

DUCT CONNECTED -High Static pressure-

FDU



Wired remote control



RC-E3
(Option)



RCH-E3
(Option)



FDU71/100/125/140V



FDU200/250V

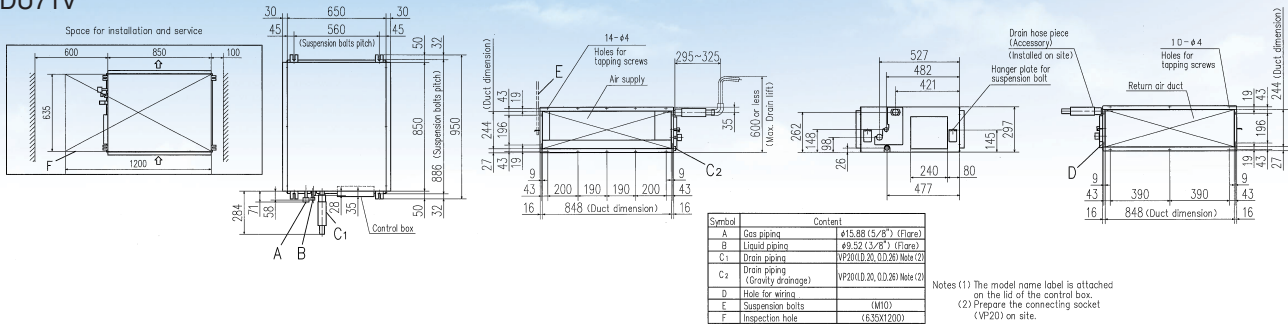
Fan control kit
(100-200Pa)



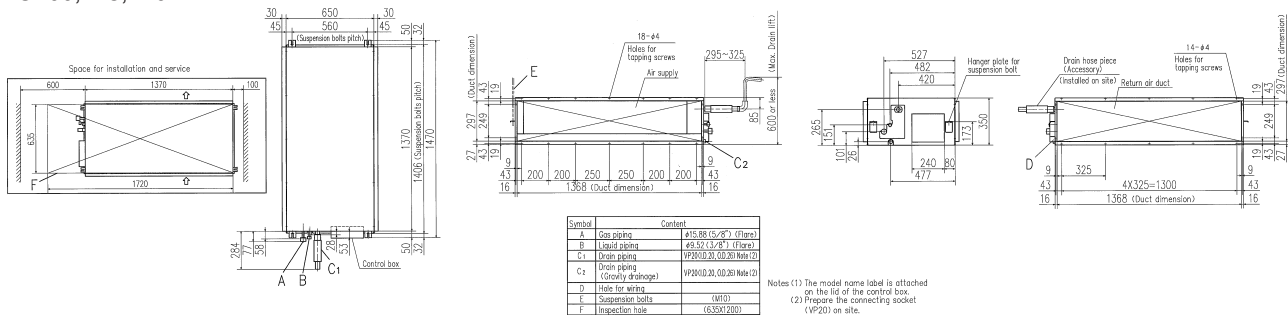
U-FCRA
[For 200/250V]
(option)

Outline drawing (Unit:mm)

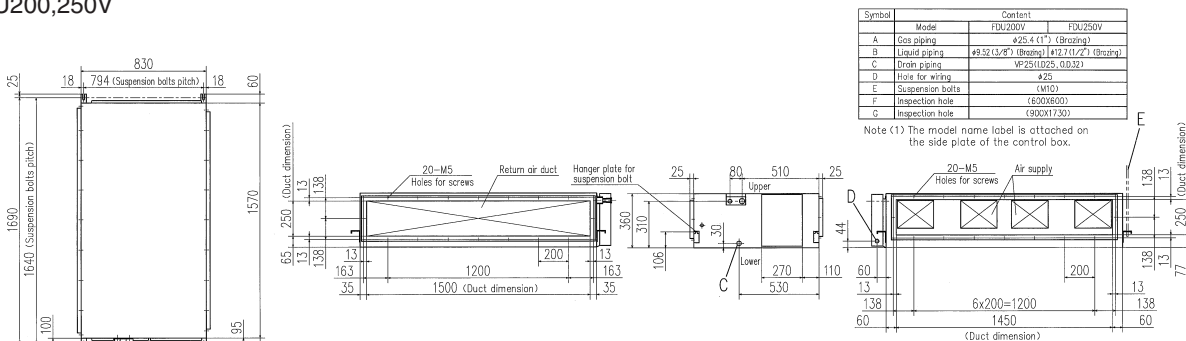
FDU71V



FDU100,125,140V



FDU200,250V



Point 1 Enhanced installation workability

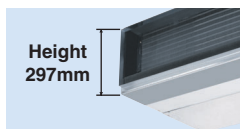
Quiet, Lightweight and Compact

With the FDU71, the noise level is only 37dB (low), weight is only 40kg and height is only 297mm.

In addition 600mm Drain Pump is mounted in FDU71/100/125/140V.

The indoor unit is completely hidden in the ceiling, so this is suitable for spaces with classy interior decoration.

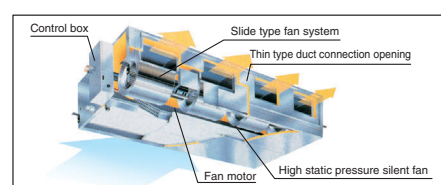
Height
297mm



Point 2 Adaptability to higher static pressures

High static pressure of 200 Pa (FDU200/250V) extends the degree of freedom in the designing of air conditioners.

This is a real and earnest model for duct air-conditioning. A unit external static pressure of up to 200 Pa (FDU200/250V) is possible. Precise air flow designing is possible.



SPECIFICATIONS

The values are for simultaneous Multi operation.

*Not available in 60Hz

Set model name			*FDU71VNV	*FDU100VNV	*FDU125VNV	*FDU140VNV	*FDU100VSV	*FDU125VSV	*FDU140VSV
Indoor name			FDU71V	FDU100V	FDU125V	FDU140V	FDU100V	FDU125V	FDU140V
Outdoor name			FDC71VN	FDC100VN	FDC125VN	FDC140VN	FDC100VS	FDC125VS	FDC140VS
Power source			1Phase 220-240V 50Hz				3Phase 380-415V 50Hz		
Type			Inverter						
Nominal cooling capacity (Min~Max)	ISO-T1(JIS)	kW	7.1 (3.2~8.0)	10.0 (4.0~11.2)	12.5 (5.0~14.0)	14.0 (5.0~14.5)	10.0 (4.0~11.2)	12.5 (5.0~14.0)	14.0 (5.0~14.5)
Nominal heating capacity (Min~Max)	ISO-T1(JIS)	kW	8.0 (3.6~9.0)	11.2 (4.0~12.5)	14.0 (4.0~16.0)	16.0 (4.0~16.5)	11.2 (4.0~12.5)	14.0 (4.0~16.0)	16.0 (4.0~16.5)
Input	Cooling/Heating	kW	2.08/2.21	2.88/2.99	4.04/3.79	4.95/4.43	2.88/2.99	4.04/3.79	4.95/4.43
COP	Cooling/Heating		3.41/3.62	3.47/3.75	3.09/3.69	2.83/3.61	3.47/3.75	3.09/3.69	2.83/3.61
Energy label	Cooling/Heating		A/A	A/A	B/A	C/A	A/A	B/A	C/A
Inrush current (Max. running current)		A	5(17)	5(25)	5(27)	5(28)	5(16)	5(18)	5(19)
Sound level *1	Indoor	dB(A)	Hi:41 Lo:37	Hi:42 Lo:37	Hi:43 Lo:38		Hi:42 Lo:37	Hi:43 Lo:38	
	Outdoor		48	49	Cooling:50 Heating:51	51	49	Cooling:50 Heating:51	51
Air flow	Indoor	CMM	Hi:25 Lo:20	Hi:34 Lo:27	Hi:42 Lo:33.5		Hi:34 Lo:27	Hi:42 Lo:33.5	
	Outdoor		Cooling:60 Heating:50	Cooling:76 Heating:74	Cooling:75 Heating:73		Cooling:76 Heating:74		
Static pressure		Pa	standard:50, Max:130						
Indoor unit	Exterior dimensions	Height x Width x Depth	mm 297x850x650		350x1,370x650				
	Net weight	kg	40		63				
Remote control			Wired:RC-E3, RCH-E3			Wireless:RCN-KIT3-E			
Outdoor unit	Exterior dimensions	Height x Width x Depth	mm 750x880(+88)x340		845x970x370				
	Net weight	kg	60		74				
Type of compressor			Rotary						
Ref.control			EEV						
Ref.amount precharged		kg(m)	2.95(30)		3.8(30)				
Ref.piping size	Liquid/Gas	ø			9.52/15.88				
Range of usage	Ref.piping length	m	50						
	Vertical height difference	between O/U and I/U	<O/U	30					
		>O/U	15						
Limitations	Air temp.	Cooling	I/U	18~30					
			O/U	-15~43*2					
		Heating	I/U	18~30					
			O/U	-10~24	-15~24				

SPECIFICATIONS

The values are for simultaneous Multi operation.

Set model name			FDU200VSV				FDU250VSV	
Indoor name			FDU200V				FDU250V	
Outdoor name			FDC200VS				FDC250VS	
Power source			3Phase 380-415V 50Hz, 3Phase 380V 60Hz					
Type			Inverter					
Nominal cooling capacity (Min~Max)	ISO-T1(JIS)	kW	20.0 (7.0~22.4)				25.0 (10.0~28.0)	
Nominal heating capacity (Min~Max)	ISO-T1(JIS)	kW	22.4 (7.6~25.0)				28.0 (9.5~31.5)	
Input	Cooling/Heating	kW	50Hz:6.59/6.08 60Hz:6.58/5.84				50Hz: 9.91/8.50 60Hz:10.21/8.22	
COP	Cooling/Heating		50Hz:3.03/3.68 60Hz:3.04/3.83				50Hz:2.52/3.29 60Hz:2.45/3.41	
Energy label	Cooling/Heating		B/A				50Hz:E/C 60Hz:E/B	
Inrush current (Max. running current)		A	5(24)				5(27)	
Sound level *1	Indoor	dB(A)	51					
	Outdoor		57	Cooling:57 Heating:58				
Air flow	Indoor	CMM	50Hz:51, 60Hz:60					
	Outdoor		Cooling:150 Heating:145		50Hz:68, 60Hz:80			
Static pressure		Pa	standard:100, Max:200					
Indoor unit	Exterior dimensions	Height x Width x Depth	mm 360x1,570x830		360x1,570x830			
	Net weight	kg	92		92			
Remote control			Wired:RC-E3, RCH-E3			Wireless:RCN-KIT3-E		
Outdoor unit	Exterior dimensions	Height x Width x Depth	mm 1,300x970x370		1,300x970x370			
	Net weight	kg	122		140			
Type of compressor			Scroll					
Ref.control			EEV					
Ref.amount precharged		kg(m)	5.4(30)				7.2(30)	
Ref.piping size	Liquid/Gas	ø	9.52/22.2		12.7/22.2			
Range of usage	Ref.piping length	m	70					
	Vertical height difference	between O/U and I/U	<O/U	30				
		>O/U	15					
Limitations	Air temp.	Cooling	I/U	18~30				
			O/U	-15~43 *2				
		Heating	I/U	18~30				
			O/U	-15~24	-15~24			

The data are measured under the following conditions(ISO-T1).

Cooling:Indoor temp. of 27°CDB, 19°CWB, and outdoor temp. of 35°CDB. Heating:Indoor temp. of 20°CDB, and outdoor temp. of 7°CDB, 6°CWB.

*1 : Indicates the value in an anechoic chamber. During operation these values are somewhat higher due to ambient conditions.

*2 : If a cooling operation is conducted when the outdoor air temperature is -5°C or lower, the outdoor unit should be installed at a place where it is not influenced by natural wind. If wind blows, the low pressure will drop and compressor frequency will increase, this will cause the capacity to drop and may cause the unit to break down.